

Enterprise System & Services — Telecommunications Division

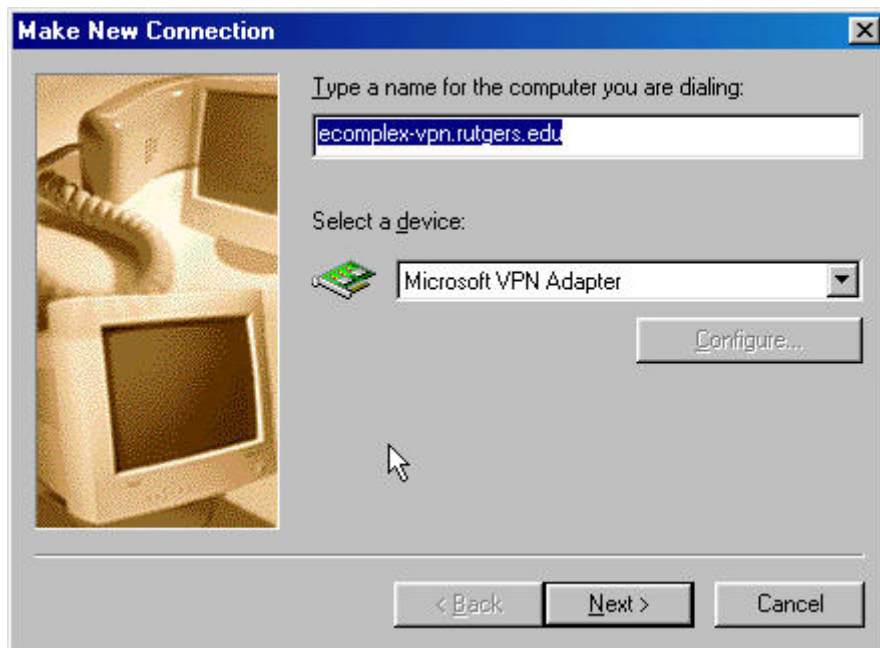
Windows 98 VPN Set up guide

This configuration guide will guide you through setting up a VPN client and server using the Windows 98 Microsoft VPN client; the setup instructions will only need to be followed the first time. After the client is set up, proceed to “connecting to the VPN” section below.

STEP-by-STEP setup instructions:

- 1) Click on Start.
- 2) Select Programs.
- 3) Select Accessories
- 4) Select Communications
- 5) Click on Dialup Networking
- 6) Double click on Make a new connection
- 7) Click on the drop box located in the “select a device” window, select Microsoft VPN Adapter.

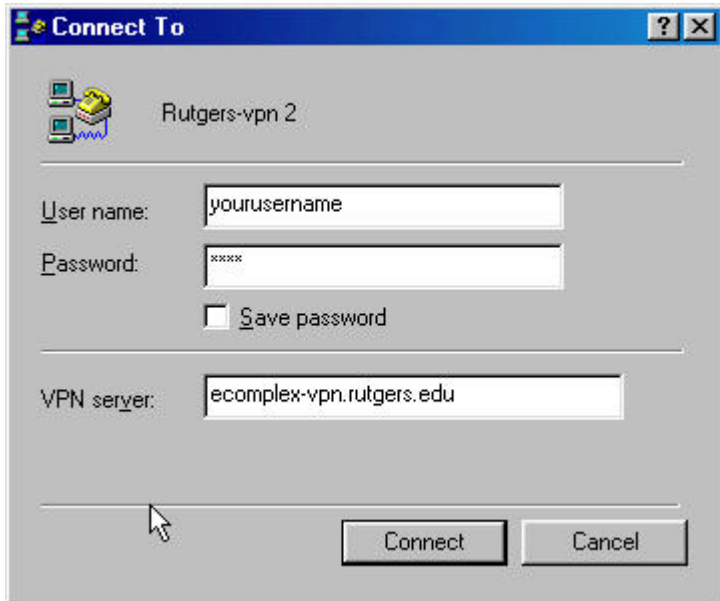
*****If you do not see the VPN adapter device, please stop and consult your windows 98 manual on how to add that device. Note: You will need your windows 98 CD**.***



- 8) Add the name of the VPN.
- 9) Click NEXT; enter this address for the VPN server **ecomplex-vpn.Rutgers.edu**
- 10) Click NEXT; You may name your connection at this point.
- 11) Click Finish to end setup process.

Connecting to the Rutgers University VPN

- 1) Return to the Dialup Networking folder and double click on your newly created connection. It will have the name given in step 10 of the setup instructions..
- 2) Enter your username and password, using the username format yourusername@ici_machine or yourusername@rci_machine



- 3) Click connect. The VPN server and the VPN client that you just configured are now negotiating and will agree on the rules of the connection.

PLEASE NOTE: At this time encryption is not supported using Microsoft VPN client.

When you have successfully connected you will see the following icon in the task tray located at the bottom right hand corner of the task tray (next to the clock).



Disconnecting from the VPN

- 1) Find the connection located next to the clock in the task tray.(icon shown above)
- 2) Double click on the icon.
- 3) Select disconnect.

If you have any questions or Problems, call the information center at 732-445-HELP.